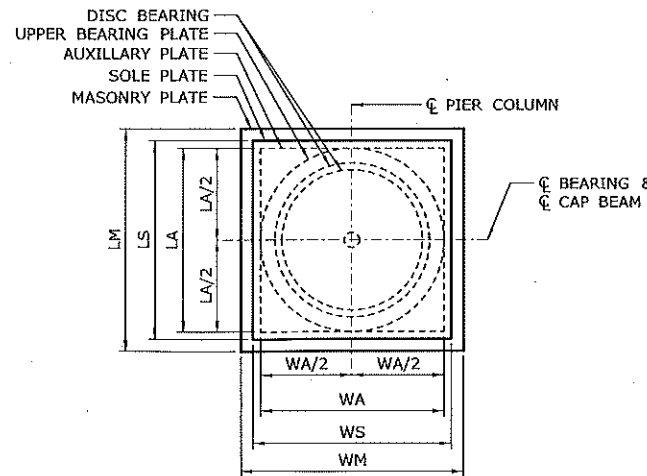
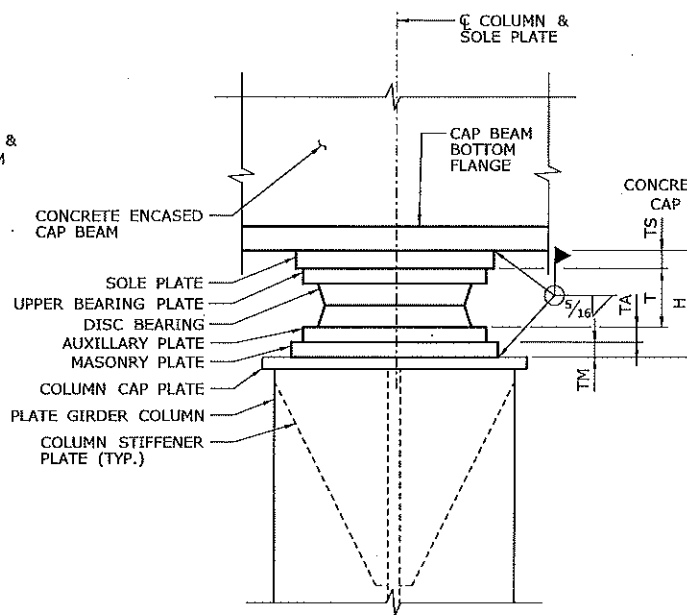


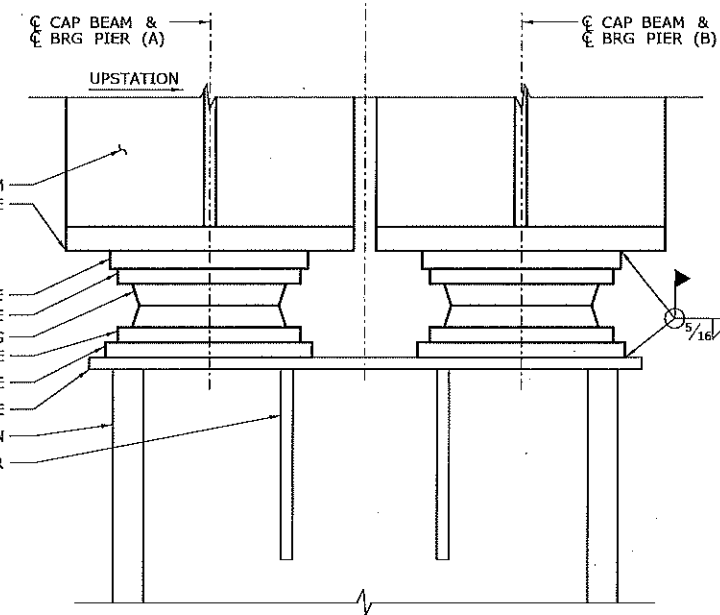
PIER BEARING LAYOUT



BEARING PLATE LAYOUT



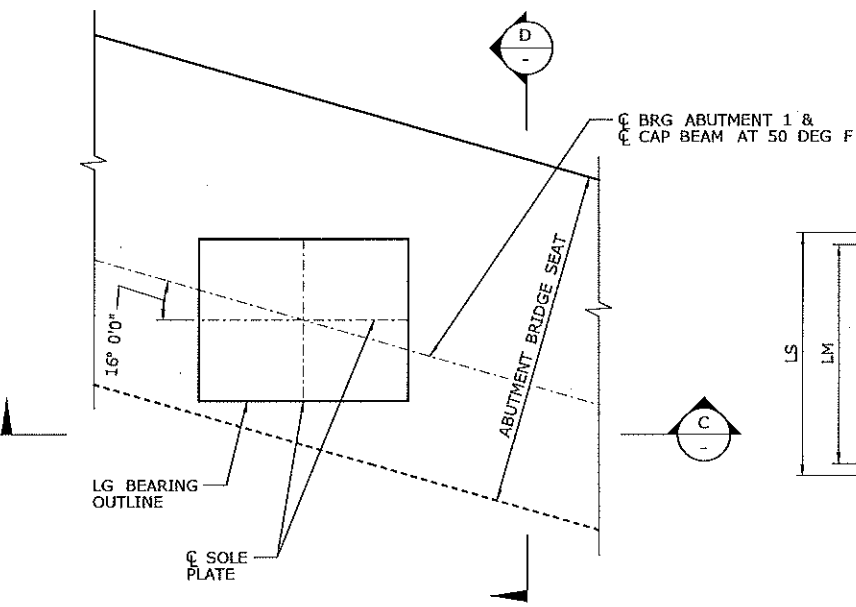
A VIEW



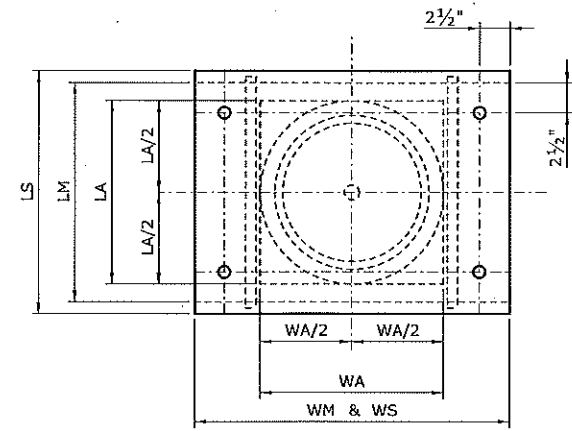
B VIEW

FIXED BEARINGS (F)

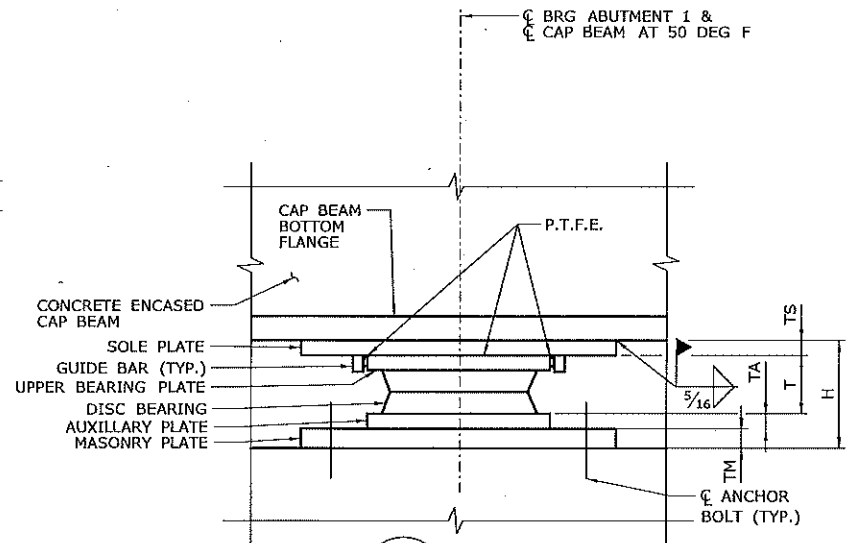
SCALE: 1 1/2" = 1'-0"



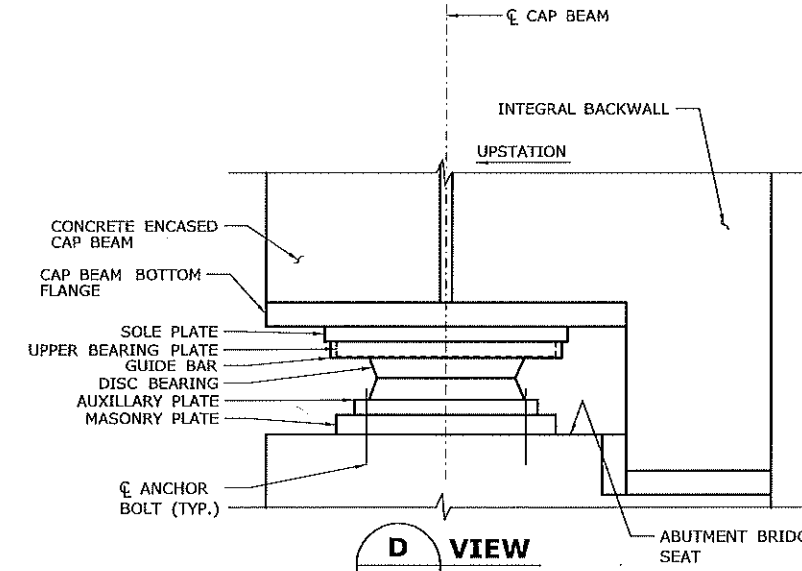
ABUTMENT BEARING LAYOUT
(ABUTMENT 1 SHOWN, ABUTMENT 2 SIMILAR)



BEARING PLATE LAYOUT



C VIEW



D VIEW

LONGITUDINALLY GUIDED EXPANSION BEARINGS (LG)

SCALE: 1 1/2" = 1'-0"

BEARING TYPE	VERTICAL LOADS (KIP)			HORIZONTAL LOADS (KIP)					MAX. MOVEMENT (IN)	MAX. LL ROTATION (RAD)	H (IN)	T (IN)	MASONRY PLATE (IN)			AUXILIARY PLATE (IN)			SOLE PLATE (IN)			ANCHOR BOLTS		QUANTITY
	DL	LL+I	TOTAL	BR	TR	SER	ULT	SUR					WM	LM	TM	WA	LA	TA	WS	LS	TS	DIA (IN)	N	
	F	210	399	609	36.1	49.8	12.9	26.1					76.2	0.00	0.0061	9.00	3.250	18.50	18.50	3.250	15.25	15.25	1.25	
LG	210	399	609	0.0	0.0	6.6	13.4	39.0	0.44	0.0061	9.00	4.875	26.25	18.50	1.625	15.25	15.25	1.25	26.25	20.25	1.25	1.00	4	36

NOTES: BR = BREAKING FORCE
TR = TRACTION FORCE
SER = SERVICEABILITY SEISMIC FORCE
ULT = ULTIMATE SEISMIC FORCE
SUR = SURVIVABILITY SEISMIC FORCE

BEARING SETTING CHART					
LONGITUDINAL MOVEMENTS (IN) AT BEARINGS DUE TO TEMPERATURE CHANGE FROM 50° F					
C BRG ABUT 1 & 2	+15	+30	+45	+60	+75
C BRG PIER (A) & (B)	0.00	0.00	0.00	0.00	0.00

12/7/2016 P:\Projects\ConnDOT\2015\500 C00-015-Graphic\510 C0001510.04 Struct.Bridge\500a_Contract_Sheet_Plot\501_MSH_Br08012R_0135_0301_BRG-2.dgn

THE INFORMATION, INCLUDING ESTIMATED QUANTITIES OF WORK SHOWN ON THESE SHEETS IS BASED ON LIMITED INVESTIGATIONS BY THE STATE AND IS IN NO WAY WARRANTED TO INDICATE THE CONDITIONS OF ACTUAL QUANTITIES OF WORK WHICH WILL BE REQUIRED. Plotted Date: 12/7/2016	DESIGNER/DRAFTER: K. BARKER CHECKED BY: J. IVES SCALE AS NOTED	STATE OF CONNECTICUT DEPARTMENT OF TRANSPORTATION Filename: ..._501_MSH_Br08012R_0135_0301_BRG-2.dgn	SIGNATURE/BLOCK: PROJECT TITLE: REPLACEMENT OF MNRR BRIDGE OVER ATLANTIC STREET PHASE 2	TOWN: STAMFORD DRAWING TITLE: BEARING DETAILS	PROJECT NO. 135-301 DRAWING NO. S-53 SHEET NO. 01.05.053
---	--	---	--	--	--